

Swidget™ 15A Outlet

The Swidget Configurable 15A Outlet is a duplex 125VAC 15A modular Smart Home enabled device (NEMA 5-15R compliant). The modularity of the device allows for easy after-market installation of a Swidget Insert that can enable the wireless control and independent power monitoring of the receptacle, in addition to providing other sought-after functions like sensors, speakers or lighting.

FEATURES

- Universal compatibility – user replaceable Swidget Inserts allow this to work with all wireless platforms, now or in the future.
- Independent direct power monitoring for each of the two (2) receptacles.
- Plug and play Swidget Inserts feature a wide range of function options spanning Smart Home and stand-alone applications that no other Smart Home platform can accomplish.
- Future proof – with the removable Swidget Inserts you can upgrade, move, reconfigure receptacles without any re-wiring.
- User-safe, employing Tamper Resistant outlets and a certified Class 2 power output for the Swidget cavity.

DESCRIPTION

The Swidget product line has been developed to support the easy integration of Home Automation and Smart Home markets with unique and flexible solutions. The Swidget Outlet has the ability to allow interchangeable Swidget Inserts to be installed, removed or replaced - making Swidget the optimal choice for building renovations and new construction. The Swidget Outlet uses a simple interface, making installation easy. Adding a Swidget Insert turns the wired device into a powerful and flexible Smart Home device. The interchangeability of the Swidget Inserts ensure that the system can work with any existing or future Smart Home wireless system.

SPECIFICATIONS

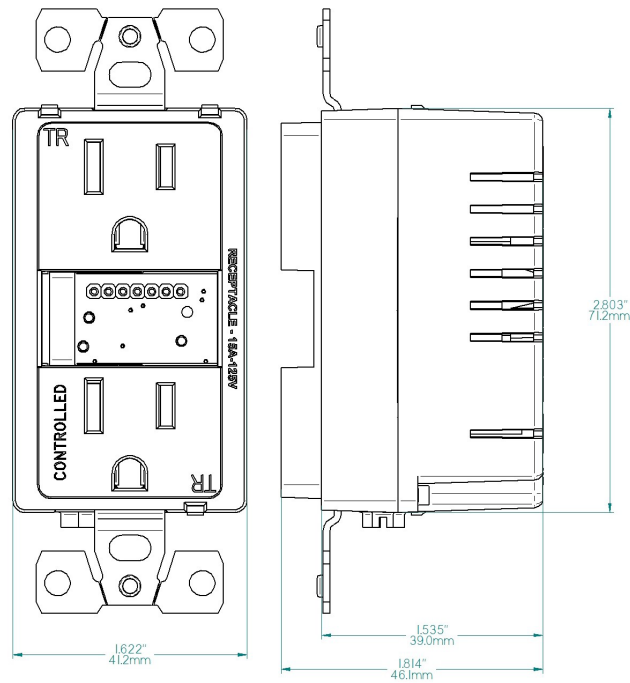
Product Number	R1015S (W=white)
Input Power Rating	125VAC, 15A
Outlet Receptacle Configuration	NEMA 5-15R
Resistive Load Rating	1800W
Motor Load Rating	0.5HP
Inductive Load Rating	8A@125VAC (PF 0.4)
Relay Mechanical Endurance Rating	1,000,000 cycles (or 274 years @ 10 cycles per day)
Wiring Type	Pre-stripped wire leads (Line/Neutral) #14 AWG (Stranded), Ground screw
Testing and Code Compliance	UL498 / UL1310, CSA C22.2 #42, #223 (Canada and US)
Flammability	UL94 5VA
Environmental	Indoor installation only
Operating Temperature	14F to 104F (-10C to 40C)
Insert Voltage Output	Nominal 5VDC (+/- 5%)
Insert DC Protection	CLASS 2 - Current limiting and thermal shutdown protection
Insert Current Output	Constant current maximum 2.0A



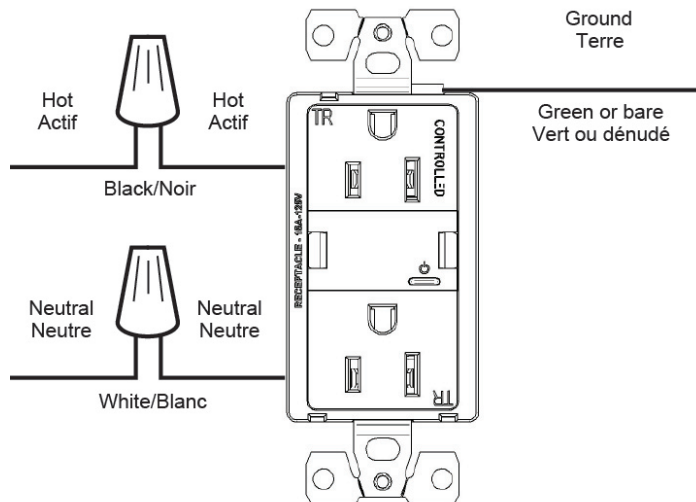
15A, 125VAC
5VDC, 2.0A
NEMA 5-15R



DIMENSIONS



WIRING DIAGRAM



REVISION HISTORY

Revision Number	Date	Comment
000	2017/07/17	Initial release
001	2019/09/14	Post certification updates
002	2021/02/24	Name Change

SALES

Corporate Office
6-677 Innovation Drive
Kingston, ON K7K 7E6
<https://www.swidget.com>

Swidget™ Wi-Fi Control Insert

The Swidget Platform is a modular Smart Home enabled system comprised of Wall Switches and Outlets. The modularity of the base devices allows for easy after-market installation of a Swidget Insert that can enable the wireless control and independent power monitoring of the outlet or switch, in addition to providing other sought-after functions like sensors, speakers or lighting.

FEATURES

- Wi-Fi 2.4GHz
- User replaceable – electrician not required
- Independent power monitoring
- Works with Amazon Alexa, Google Assistant and IFTTT*
- Regular OTA upgrades to expand the capabilities

DESCRIPTION

The Swidget product line has been developed to support the easy integration of Home Automation and Smart Home markets with unique and flexible solutions. Designed to be integrated into all major Smart Home protocols, the Swidget Wi-Fi Control transforms the Swidget Outlet or Switch into a Wi-Fi smart device.

Using the free Swidget App (available for Android and iOS), unlock your Swidget device to perform any number of tasks:

- Power On/Off your outlet or switch
- Monitor your energy consumption
- Schedule devices to conserve energy
- Set multiple automatic notifications including when your power consumption is too high

As all Swidget Inserts operate on the Class 2 certified interface, an electrician is NOT required for installation or removal.

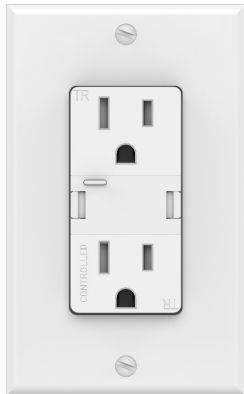
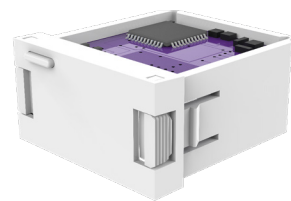
SPECIFICATIONS

Product Number	WI000UWA
Wireless Standard	Wi-Fi 802.11g
Wireless Band	2.4GHz
Average Power Rating	5Vdc @ 40mA (Class 2)
Device Compatibility	Amazon Alexa, Google Assistant and IFTTT*
Device Upgrades	OTA
Environmental	Indoor installation only
Operating Temperature	14F to 104F (-10C to 40C)

REVISION HISTORY

Revision Number	Date	Comment
000	2019/09/27	Initial release

*3rd party integrations are controlled and managed by external service providers. Swidget makes no warranty that these services will continue to exist or be supported over the full life of the product.



SALES

Corporate Office
6-677 Innovation Drive
Kingston, ON K7K 7E6
<https://www.swidget.com>